

# TETON INSTALLATION MANUAL



**Teton.AI**

Uplandsgade 56, 2  
2300, København S  
Denmark

Copyright 2025 Teton.AI ApS

All rights reserved.

Changes are periodically made to the information herein which will be incorporated in revised editions of this publication.

Teton may make changes or improvements to the product(s) described in this publication at any time and without notice.

Make sure you have the most up-to-date version before proceeding.

Table of Contents

**OVERVIEW.....4**

    TETON EDGE .....4

    THE SENSOR .....4

    TETON ALERTS APP .....4

**EQUIPMENT REQUIRED.....4**

**PREPARATION.....4**

    CONTENTS.....5

    SETUP THE APP (TO BE COMPLETED PRIOR TO INSTALLATION) .....6

**INSTALLING THE TETON EDGE.....7**

    HOSPITAL ROOM INSTALLATION .....7

    MID-LONGTERM CARE INSTALLATION (SENIOR LIVING, CARE HOME & REHABILITATION CENTER) .....7

    INSTALLATION.....8

**INSTALLING THE POWER SUPPLY ..... 11**

    INSTALLATION..... 11

**INSTALLING THE SENSOR ..... 14**

    HOSPITAL ROOM INSTALLATION ..... 14

    MID-LONGTERM CARE INSTALLATION (SENIOR LIVING, CARE HOME & REHABILITATION CENTER) ..... 14

    SENSOR POSITION CHECKLIST ..... 14

    INSTALLATION..... 15

**COMPLETING THE INSTALLATION..... 18**

**INSTALLATION CHECKLIST (for installer) ..... 19**

**INSTALLATION SIGNOFF (for site leader) ..... 20**

# OVERVIEW

## TETON EDGE

The Teton Edge is a compute unit used to interpret the information obtained by the sensor within the room it is installed and communicate that interpreted information to the care staff.

## THE SENSOR

The sensor is connected to the Teton Edge using an CAT6 cable and is used to detect the activities of the patient or resident. Each Teton Edge can support up to 4 sensors depending on the application. Activities that the sensor detects include sleep activity, resident status (in bed, sitting on bed, out of room, etc.), respiration activity, fall detection, and others.

## TETON ALERTS APP

The Teton Alerts app is the primary vehicle for staff to engage with the Teton data. It also plays a key role in ensuring the system is set up properly within each room and community. The app can be downloaded at no cost from the app store on your smartphone.

## EQUIPMENT REQUIRED

- Smartphone
- *Teton Alerts* app (available in the app store)
- 3 mm Hex driver
- Ladder
- Power drill, bits, & screws
- Level
- Cable canals / trunking – 20 mm x 35 mm (0.80 in x 1.40 in) (recommended)
- Vacuum (recommended)

## PREPARATION

Start by inspecting the packages for damage. If signs of damage exist, please photograph and contact Teton at [shipping@teton.ai](mailto:shipping@teton.ai).

## CONTENTS

### ***Teton Edge***



*Compute unit; Teton Edge mount; Teton Edge locking screw*

### ***The Sensor***



*Sensor; Sensor mount; Mounting hardware*

### ***Accessories***



*Power supply; Power supply mount*

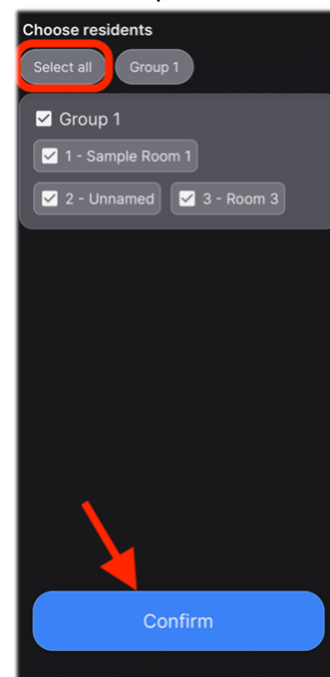
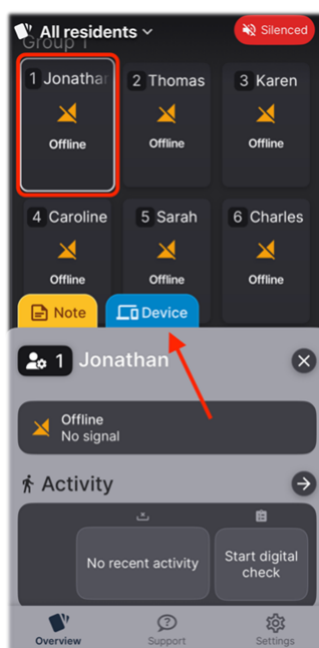
### ***Cables***



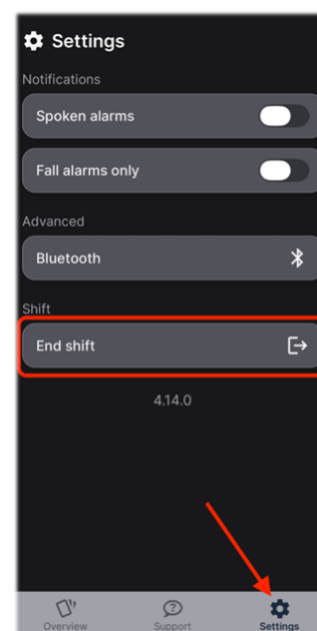
*CAT6 cable; Power cable*

## SETUP THE APP (TO BE COMPLETED PRIOR TO INSTALLATION)

1. Download the *Teton Alerts* app onto your smartphone from the app store.
2. Open the app and enter the **activation code provided to you by Teton**.
  - a. **Note:** This is a one-time code that is only used the first time you are accessing the Teton app.
3. Login to your Teton account. You should have received an activation and password reset email from Teton.
4. To enter the site in the app, select the site where the installation is occurring and press *Start shift*.
5. Press *Select all* and *Confirm*.
6. Select one of the beds on the overview screen and confirm the **Device** tab is present.



7. To exit the site, navigate to the settings page and select *End shift*.



## INSTALLING THE TETON EDGE

Start the installation by first determining the location of where the Teton Edge will be installed in the room. It must be installed on a vertical surface (a wall) within the living unit and **within 2 m (6 feet) of a power outlet**. The Edge unit must also be **within 10 meters (30 feet) of the sensor(s)**.

### HOSPITAL ROOM INSTALLATION

In hospital rooms, each bed within a room will require its own dedicated sensor; however, every **1 Edge unit** can support up to **2 sensors**. When selecting the Edge unit location, it's important to mount it in a location that will allow for up to two sensors to be plugged in.

<b>1 Bed</b>	1 Edge Unit	1 Sensor
<b>2 Beds</b>	1 Edge Unit	2 Sensors
<b>3 Beds</b>	2 Edge Units	3 Sensors
<b>4 Beds</b>	2 Edge Units	4 Sensors

### MID-LONGTERM CARE INSTALLATION (SENIOR LIVING, CARE HOME & REHABILITATION CENTER)

In residences that have multiple rooms, for example a bedroom and a living room, multiple sensors should be used. One installed in the bedroom to monitor the bed, and one in the center of the living room. **1 Edge unit** can support up to **4 sensors**. Take this into consideration when determining where to install the Edge unit, as all of the sensors will need to be connected to the Edge unit via CAT6 cable.

<b>Bedroom</b>	1 Edge Unit	1 Sensor
<b>Room #2</b>	1 Edge Unit	2 Sensors
<b>Room #3</b>	1 Edge Unit	3 Sensors
<b>Room #4</b>	1 Edge Unit	4 Sensors

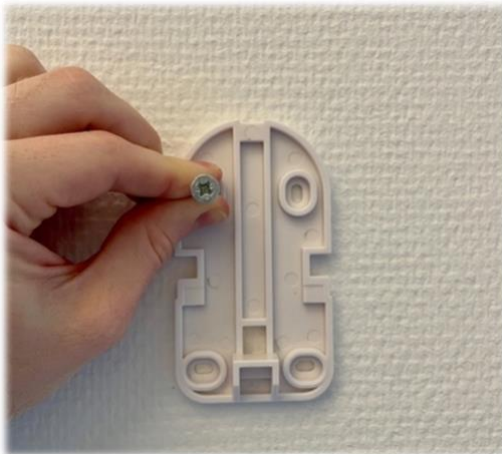
8. Identify an outlet that will be used for powering the Teton Edge. This outlet should be located where the resident, patient, and staff will not remove the plug. Somewhere separate from lights, televisions, and other appliances. When possible, outlets located near the ceiling of the room are best.
  - a. **Note:** When necessary, a new, dedicated outlet may need to be installed for the device.



9. The Edge unit can be installed on any wall within the room; however, we recommend placing the Edge device near the top of the wall, close to the ceiling, and not near the head of the bed - The device has lights and an internal fan that can be distracting for some while sleeping. Also, ensure the area around the unit will allow for proper airflow.

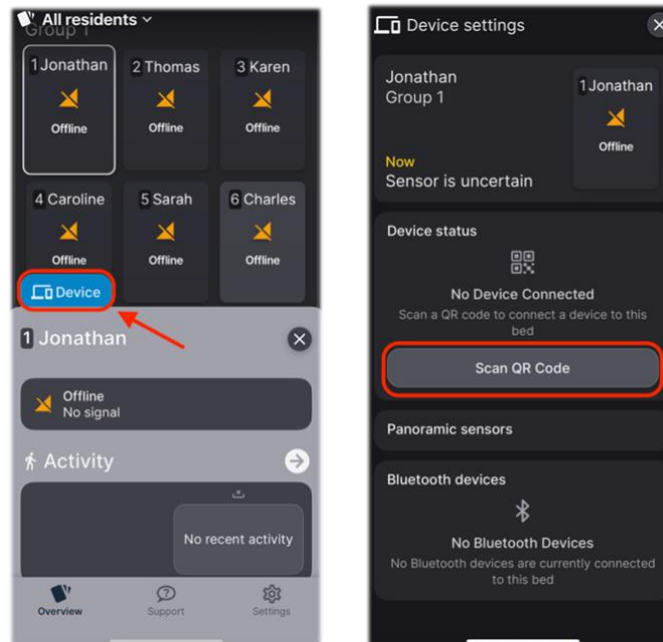
## INSTALLATION

10. Open the box labeled *Accessories*.
11. Remove the lock screw from the Edge mount and use a level and power drill to install the device mount by screwing it on to the wall.



12. Open the box labeled *Teton Edge Unit* and take out the compute unit.
13. Open the Teton App and click on the room and bed where the unit will be installed.
14. Select the *Device* tab and *Scan QR Code*. Scan the QR on the back of the Edge unit.  
The QR scanner will close automatically when scanning is successful.
  - a. **Note:** If there is a problem scanning the QR code, press *Enter code manually*.





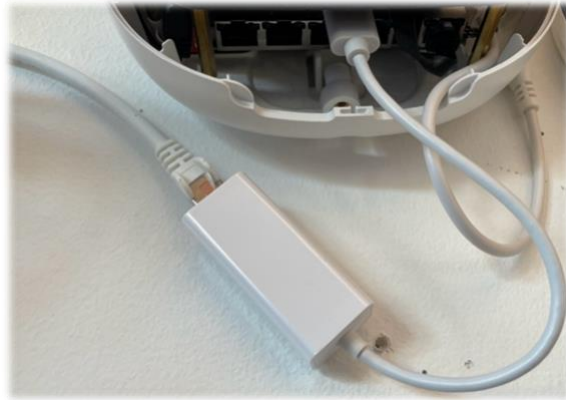
15. Mount the Edge unit to the wall by aligning the slot on the back with the mount.



16. Position the device slightly above the mount, then press against, and slide down onto, the mount. The clips on the back of the device should be fully seated.



17. **For Ethernet or LTE connection**, install an included dongle into one of the USB ports. If using Ethernet, connect the facility Ethernet to the dongle.



*Wired ethernet connection*



*Cellular LTE Dongle*

## INSTALLING THE POWER SUPPLY

### INSTALLATION

18. In the accessories box, take the power supply and power supply mount out of the box. Also get a power cable out of the cable box.
19. Identify the best location to mount the power supply and mounting bracket such that the power supply cable can reach the Teton Edge power connector, and the power cable can connect to the power outlet identified earlier.
20. Install the power supply mounting bracket to the wall using a screw.
  - a. **Note:** It is important that you pay attention to the orientation of the power supply mount. Make sure the larger square opening for the power cable is pointed towards the power outlet.



21. Once the mounting bracket has been installed, slide the small power supply cable through the hole in the mount and slot the power supply unit into the bracket.



22. Extend the power supply cable and connect it to the Teton Edge unit.



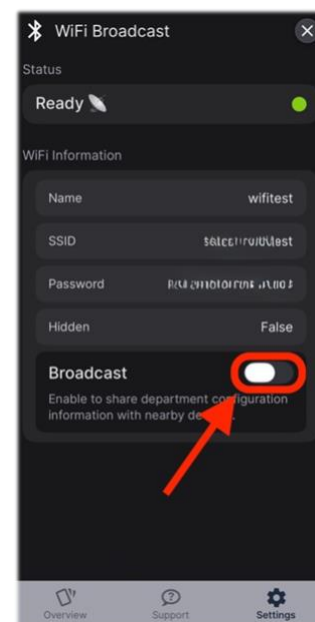
23. Plug the power cable into the power supply and power outlet.



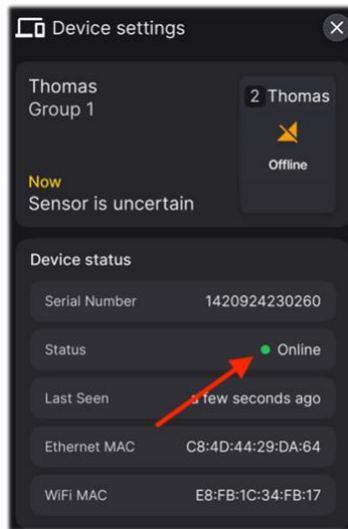
24. Confirm that power is connected by checking that the green light is illuminated on the power supply, and green and orange lights are illuminated inside the Teton Edge.

25. **If connecting to Wi-Fi**, open the Teton app and navigate to the settings page. Select *Bluetooth* and activate the broadcast toggle to share the network credentials with the Edge unit. This can take up to 5 minutes to complete.

- a. **Note:** The app must be open and the phone within 10 feet of the Edge unit for Wi-Fi configuration.
- b. **Note:** The connection status can be monitored on the *Devices* tab of the selected room.



26. Confirm the Edge unit is online and connected to the Wi-Fi by the status indicator on the *Devices* tab.



27. Route the cables along the wall using cable canals, or behind the walls using cable guide rods, such that the result is clean and presentable to the standards of the resident and staff.



# INSTALLING THE SENSOR

## HOSPITAL ROOM INSTALLATION

Align the sensor with the middle of the bed (lengthwise) and mount it at the foot of the bed.

## MID-LONGTERM CARE INSTALLATION (SENIOR LIVING, CARE HOME & REHABILITATION CENTER)

Depending on the number of rooms in the residence, up to 4 sensors will need to be installed. One in the bedroom, and up to 3 additional sensors in other rooms. This ensures the Teton system is able to monitor the resident throughout the entire living space.

**Note:** Each sensor installed will need to be connected to the Edge unit via CAT6 cable.

## SENSOR POSITION CHECKLIST

☐ Sensor should be placed **at least 1,0 meter (3.0 feet)** from any wall. The center of the room is often ideal.

☐ The sensor must be **at least 0,5 meters (1.5 feet)** from any ceiling mounted obstructions, such as fans, lamps, and resident lift equipment, and there **must** be a clear line of site between the sensor and the bed (when in a bedroom)

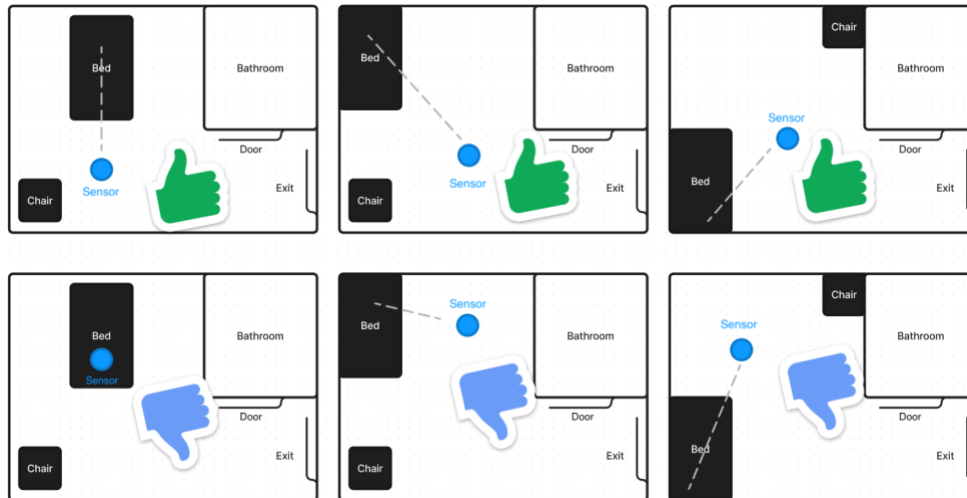
### *IN BEDROOMS:*

☐ The sensor should be **at most 1,0 meter (3.0 feet)** away from the bed **towards the center of the room.**

**Important:** If the location of the bed is unknown or moves around, position the sensor in the center of the room.

### *WHEN POSSIBLE:*

☐ There should be a clear line of site to the bathroom door. Prioritize view of bathroom door over visibility of hallways.

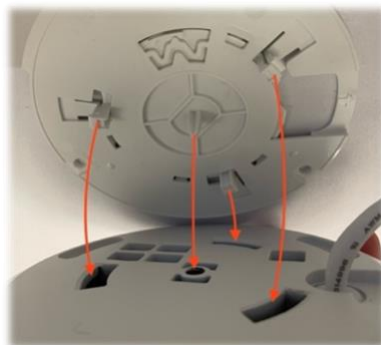


## INSTALLATION

28. Remove the sensor and sensor mounting bracket from the box labeled *Teton Sensor*. Also remove an CAT6 cable from the cable box.
29. Take the sensor mounting bracket and install it onto the ceiling using 3 screws.



30. Take the sensor and install it onto the bracket, taking care which direction the cable is facing, by lining up the holes and pins and pressing up against the bracket and ceiling.



31. Rotate the sensor counterclockwise until it clicks in.

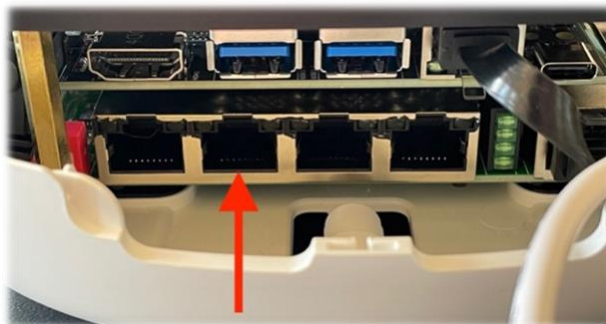


32. Make sure the sensor has been mounted properly by confirming the arrow indicates the locked position and the sensor doesn't detach when gently pulled.

33. Next, install the CAT6 cable into the end of the sensor and route the cable along the ceiling over to the Teton Edge such that it is clean and presentable to the standards of the resident and staff.

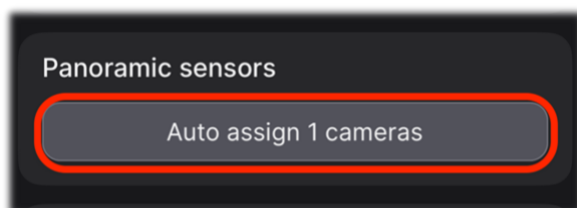


34. Finally, plug the CAT6 cable into one of the available ports inside the Teton Edge. There should be an audible click when it's fully installed, and solid green and blinking orange lights should be present around the port.

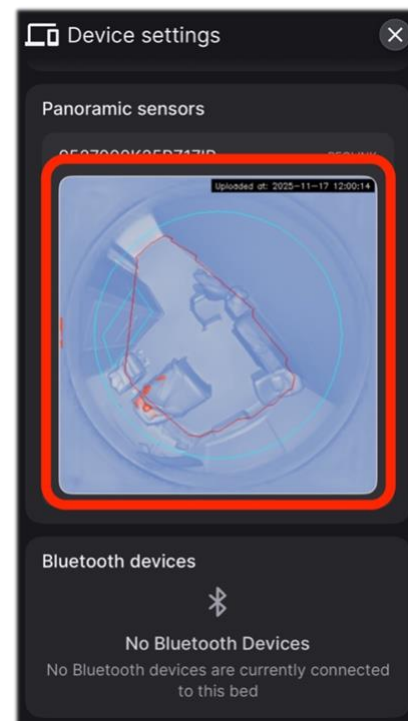




35. Now that the sensor(s) have been connected, in the Teton app, select the device page within the room the Edge unit is installed in and assign the sensor by pressing the button that says *Auto assign*.
- a. **Note:** It may take up to 2 minutes after pressing the button for the sensor to be paired.



36. On the *Device* tab, confirm the sensor is registering as connected and **review the sensor preview image to confirm the bed and any other high traffic areas are visible.**



37. Review that the devices and cables have been installed neatly, and where appropriate, cable channeling has been used effectively to conceal any cables.
38. Close the Edge unit cover and secure the device to the wall by screwing the provided screw into the bottom of the device.
- c. **Note:** Hold the top of the Teton Edge while securing the screw. It may fall off.



## COMPLETING THE INSTALLATION

39. Review and confirm the status of each Edge unit installed to make sure it is online, connected to the correct number of sensors, and on the correct Wi-Fi network.
  - a. If any units are offline or not connecting to the sensors or correct network, power cycle the Edge unit and contact Teton.
40. Complete the *Installation Checklist* below and review the installation with the residents and community leader for approval. Have the community leader complete the *Installation Signoff* and send to [shipping@teton.ai](mailto:shipping@teton.ai).

## INSTALLATION CHECKLIST (for installer)

- ☐ All Edge units are installed and assigned to the correct room.
- ☐ All beds and rooms have been matched with a Sensor and Edge unit in the app.
- ☐ Edge units are online and connected to the internet.
- ☐ All Edge mount screws have been fully installed and fastened.
- ☐ The Edge unit and sensor do not cause obstructions preventing the use of equipment such as lifts, lights, doors, closets, etc.
- ☐ No obstructions block the sensor's ability to monitor the room, **especially the bed.**
- ☐ Cable channeling has been installed to protect and hide the cables (where needed).
- ☐ Site leader has been informed and has signed the Install Completion form.
- ☐ A photo of one completed installation and the Install Checklist and Installation Signoff forms have been sent to [shipping@teton.ai](mailto:shipping@teton.ai).

Name: \_\_\_\_\_

Signature: \_\_\_\_\_

Date: \_\_\_\_\_

## INSTALLATION SIGNOFF (for site leader)

By signing below, the undersigned confirms that they have reviewed the installation of the Teton.ai hardware devices at the site and are satisfied with the completed work. The installation has been carried out in accordance with the agreed scope, layout, and technical specifications provided prior to the installation date. All devices have been installed in their designated locations, have passed initial functionality checks, and are operational at the time of handover. By signing this form, the undersigned acknowledges that the installation is now complete and meets the expectations agreed upon between the site and Teton.ai.

Name: \_\_\_\_\_

Signature: \_\_\_\_\_

Date: \_\_\_\_\_

Comments: