



# Teton Product Suite Ecosystem Overview



teton.ai

# Room Understanding

Teton offers an array of detections available to staff, including the following metrics

 Mobility

 Staff Presence

 Respiration

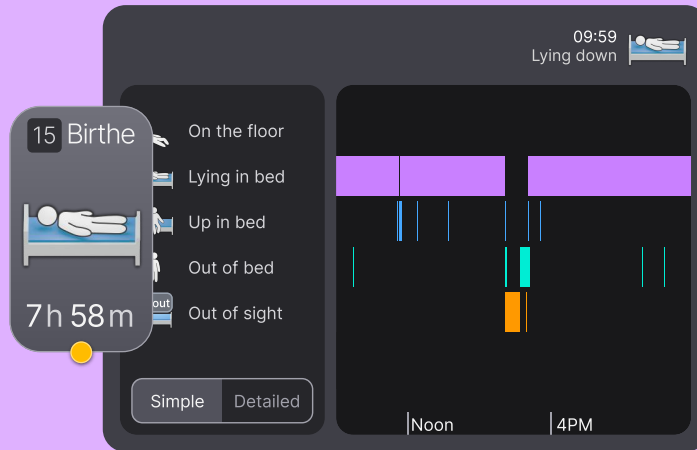
 Sleep

 Gait

 Bathroom + Out of Room

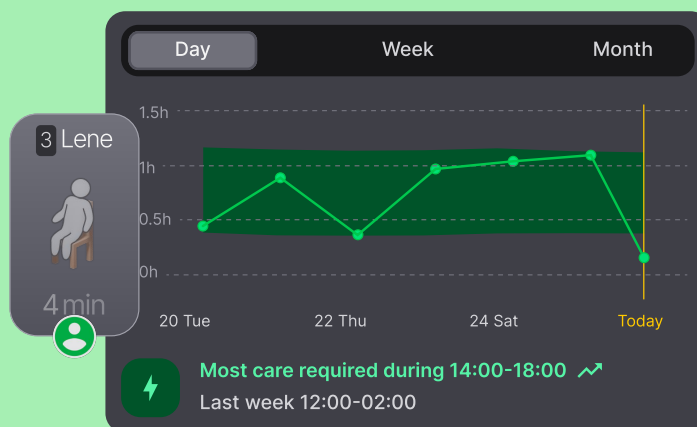
## Mobility

Real-time detection of resident states including standing, sitting, lying in bed, sitting on edge of bed, walking speed, and falls. This is available in live and historical views for understanding patterns and changing routines over time.



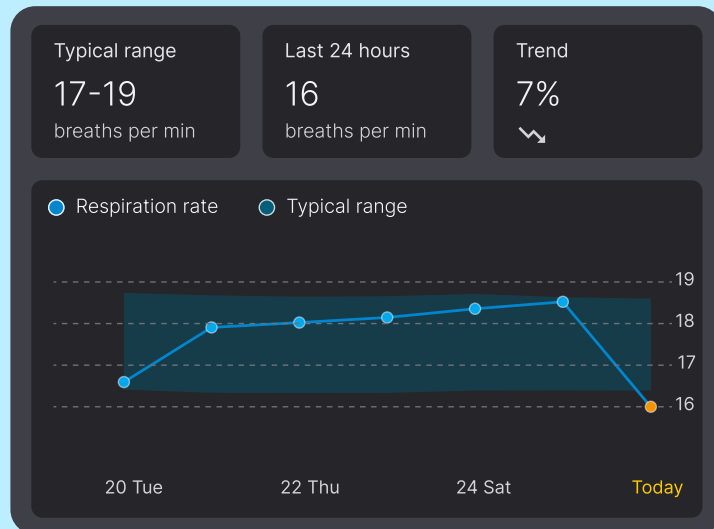
## Staff Presence

Automatic detection when care staff enter resident rooms, displayed as green circles on resident cards. Also used to calculate reaction times, and in the leadership workflows to calculate care burden and staffing optimisation.



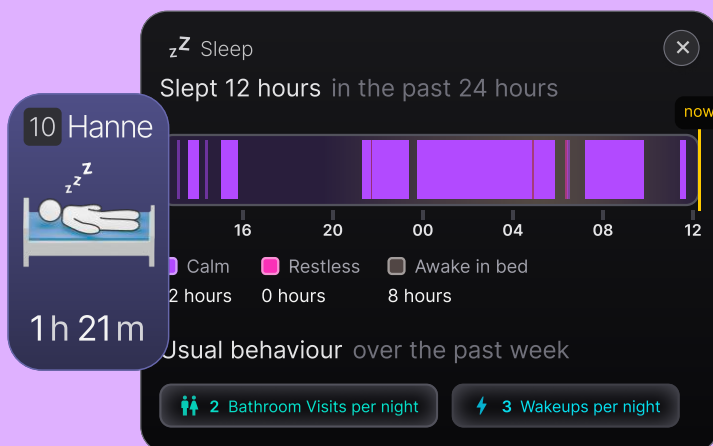
## Respiration

Automated breathing rate monitoring using micro-movement detection. Establishes baseline "normal range" for each resident and flags significant deviations as potential health indicators.



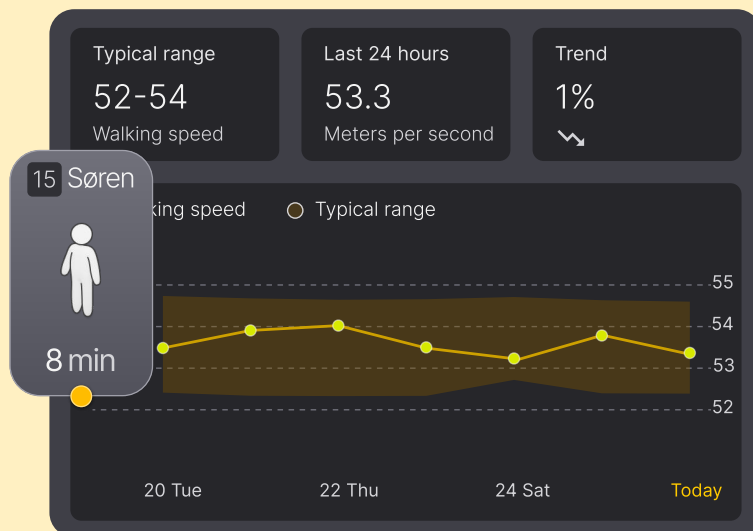
## Sleep

Live detection of sleep using a synthesis of respiration and other movement signals. Easily see changes in sleep routines, wakeups during the night, and times of extended restless sleep.



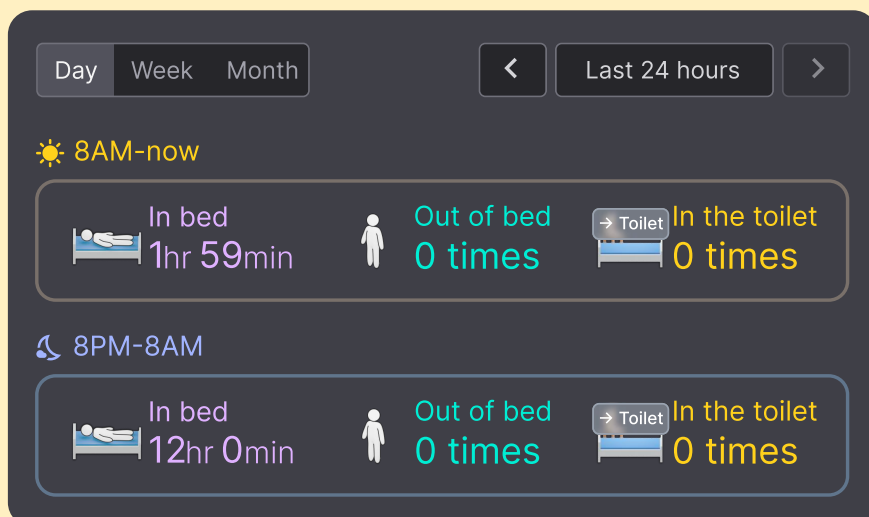
## Gait

Assess walking patterns in real-time by measuring walking speed. Track changes over time to identify mobility decline, fall risk and rehabilitation progress. Provides objective assessments without requiring wearables or manual observation.



## Bathroom and Out of Room

Automatic detection for if a resident leaves the room, either for the bathroom or leaving their residence. Staff can configure to get alarms if resident has been out of view or in bathroom for too long. Amount of visits, and visit duration, available in historical view.



# Care Staff Workflows

Data is transformed in to helpful and actionable tools for care staff

 Alarms

 Live Overview

 Anonymised Falls

 AI Rounding

 Support

 Emergency-Call

 Insights

## Alarms

Multi-tier notification system with customizable alerts per resident. Fall alarms include escalating re-alarm cycles (every 2 minutes) and team coordination features. Supports audio and spoken alarms for hands-free awareness.



Three alarm notification cards are displayed on a yellow background. Each card includes an icon, a resident ID and name, a timestamp, and a description of the activity.

Icon	Resident	Time	Activity
	88 Marcus	15:31	Sitting at the edge of bed
	63 Martha	15:30	Standing up!
	63 Martha	15:30	Sitting at the edge of bed

## Live Overview

Real-time dashboard showing all resident activities simultaneously (activity, sleep, and staff presence). Visual risk indicators (blue/yellow/red circles) help prioritize care delivery.

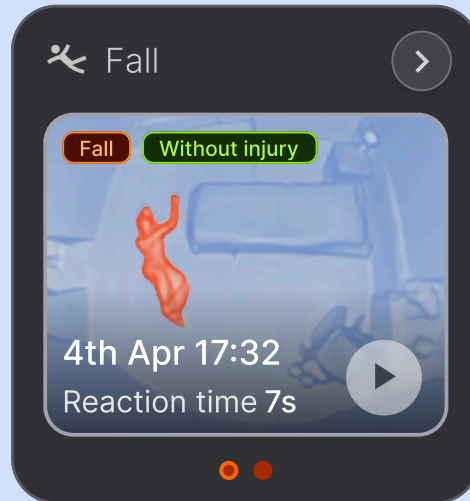


The Live Overview dashboard for Building 114 displays a grid of resident activity cards. Each card shows the resident's name, ID, current activity (Out, Sleeping, or Awake), and a duration. A color-coded circle at the bottom of each card indicates the risk level: blue for low, yellow for medium, and red for high.

Building 114					
 8 Niels → Out 15 min Blue circle	 10 Hanne Sleeping 1 h 21 m Blue circle	 4 Eva Sleeping 10 h 36 m Green circle	 5 Knud → Out 8 min Yellow circle	 6 Ove Sleeping 3 min Blue circle	 3 Anna → Out 22 min Yellow circle
 4 Bente Sleeping 13 min Blue circle	 5 Gerda → Out 25 min Blue circle	 6 Poula Sleeping 3 h 31 m Yellow circle	 7 Mona Sleeping 11 min Blue circle		

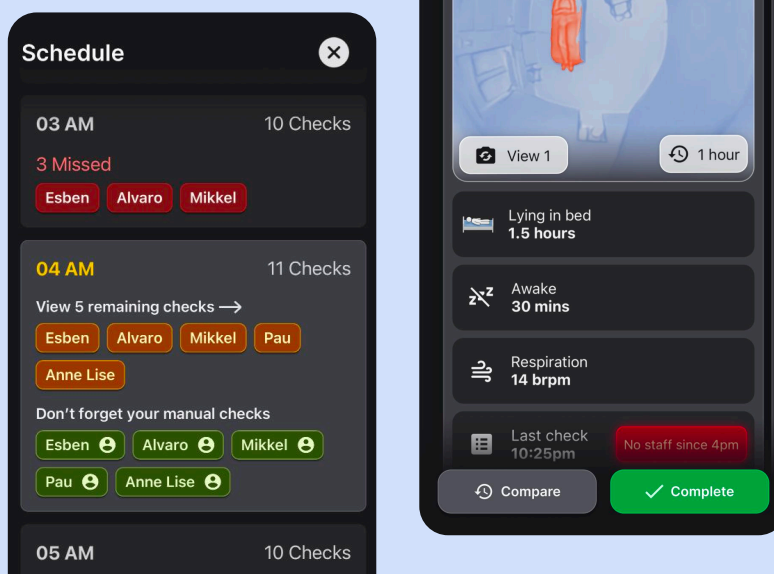
## Anonymised Falls

30-second anonymized animations of fall events for post-incident analysis. Helps staff understand fall circumstances, assess injury risk, and develop prevention strategies while maintaining resident dignity.



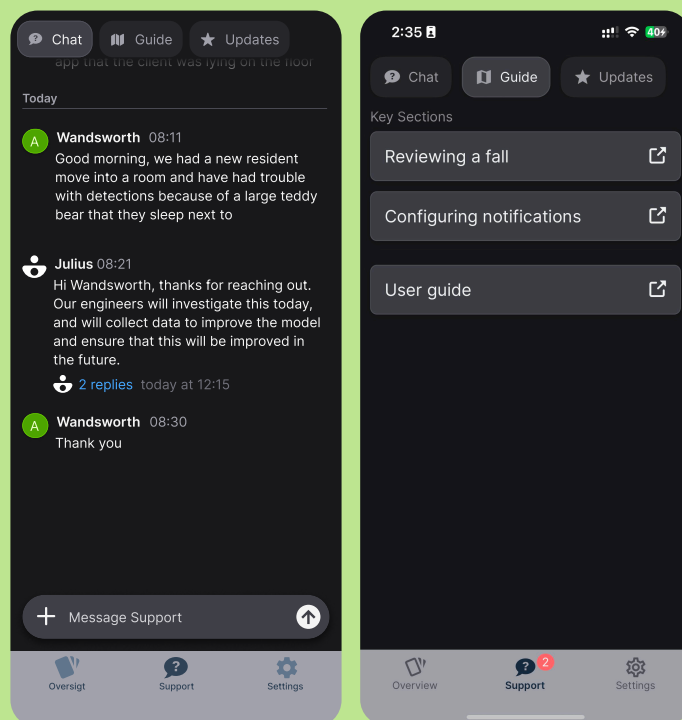
## AI Rounding

Scheduled and adhoc check-ins can be created, providing staff with a higher fidelity peek into the room. This can be used by staff to evaluate whether to carry out a physical round, or whether a digital check-in is sufficient. Adherence and completion rates for scheduled checks can be tracked.



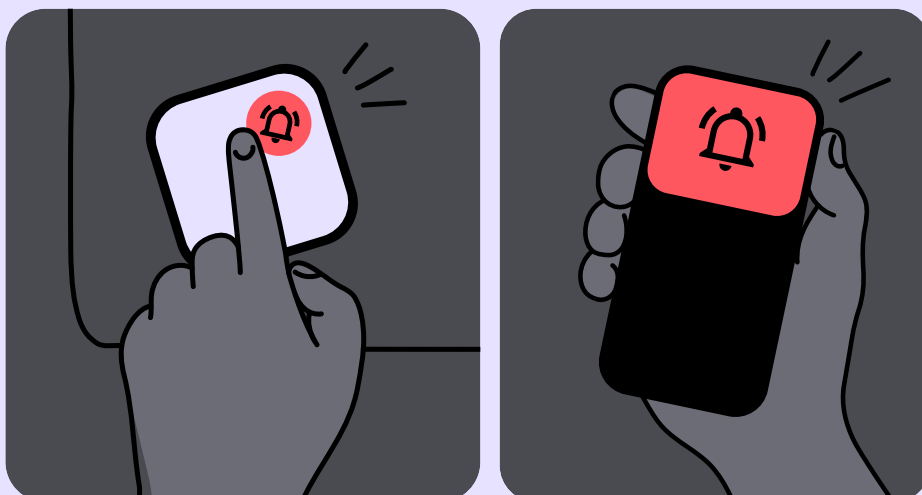
## Support

Integrated chat system for direct communication with Teton team. Includes access to user guides, release notes, and mobile access code generation for new devices.



## Emergency-Call **Not included in agreed pilot**

Residents can press a button to request help from staff. Staff can call into the room via our app and hardware, or they can walk over and check on the resident.



## ✦ Insights

Analytics tracking all detections over time to identify patterns and deviations from baseline behavior. Monitors changes in everything that the system can detect. System can recommend next steps and follow ups.

### ✦ Resident Insights



#### More sleep with less time in bed

Resident shows fluctuating sleep duration with recent decrease in out of bed hours and increased bathroom visits.



Less time out of bed



More bathroom visits



More time in bathroom



Fluctuating sleep



# Leadership Workflows

Live resident data is aggregated and made actionable for leaders



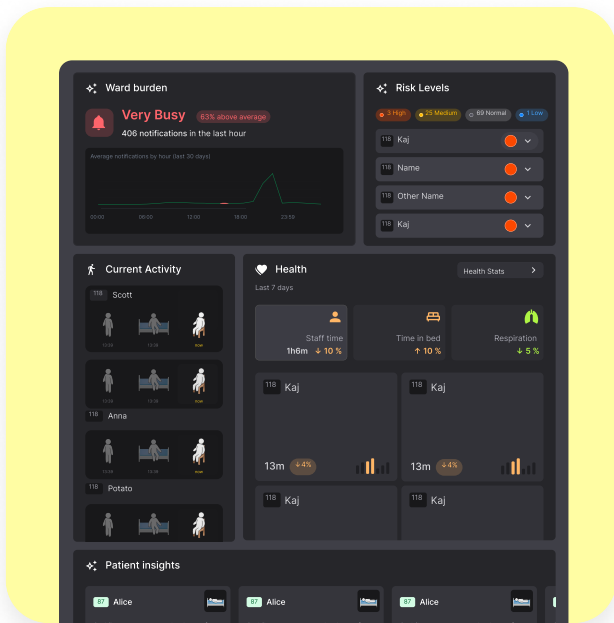
Department View



Data Platform



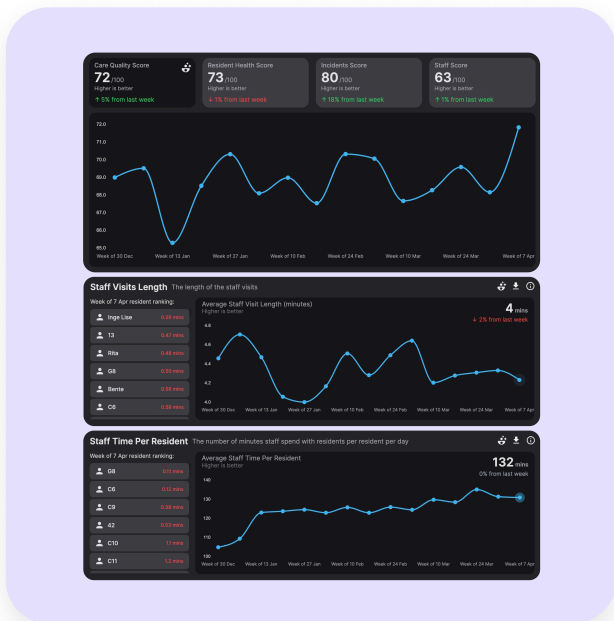
AI Analyst



## 🏠 Department View

A valuable overview of the entire facility for executive directors and leaders. Here they can gauge burden levels, resident risks, staff time with residents and insights.

Inspect important risk factors like falls and how they were responded to, as well as looking at staff coverage rates when using the Teton system.



## 📊 Data Platform

Long-term data repository providing leadership and customer data teams with comprehensive analytics capabilities.

Enables cross-site performance benchmarking and data export for integration with existing BI tools and workflows.



## 🤖 AI Analyst (Samwise)

Samwise is our AI chat analyst for inquiring about and exploring the data that is generated through Teton. This scales from single homes, all the way to comparing multiple facilities.

It can generate graphs, come with summaries, and highlight the more salient details of the data.

# Touchpoints

Our products are accessed through different touch points depending on the user

 Mobile App

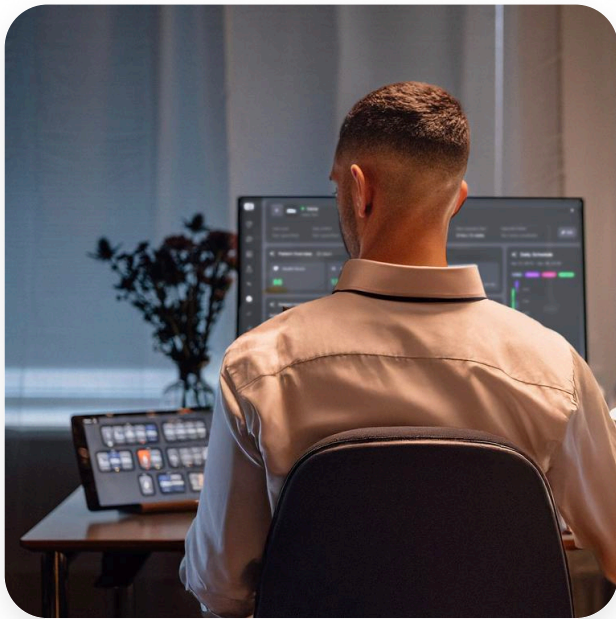
 Web App

 Overview Screen



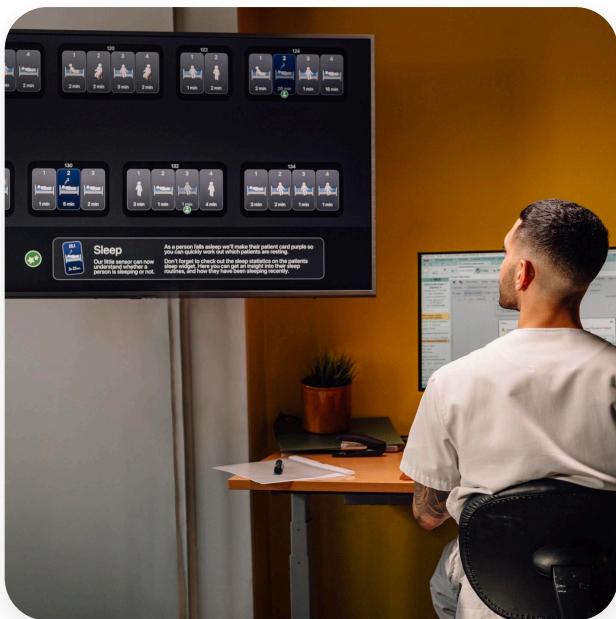
## 📱 Mobile App

iOS/Android app (Teton Alerts) for care staff with shift-based resident selection, real-time notifications, and access to resident activity timelines and sleep data.



## 🖥️ Web App

Full-featured browser-based platform ([app.teton.ai](https://app.teton.ai)) providing comprehensive resident monitoring, department view, and administrative functions including fall review and settings management.



## 🖥️ Overview Screen

Large-format displays for centralized nursing stations showing real-time overview across all rooms in a department.